



Perth

1,570 / 2,230 sq.ft.
Elevation A



Perth

1,570 sq.ft.
Elevation B



Perth

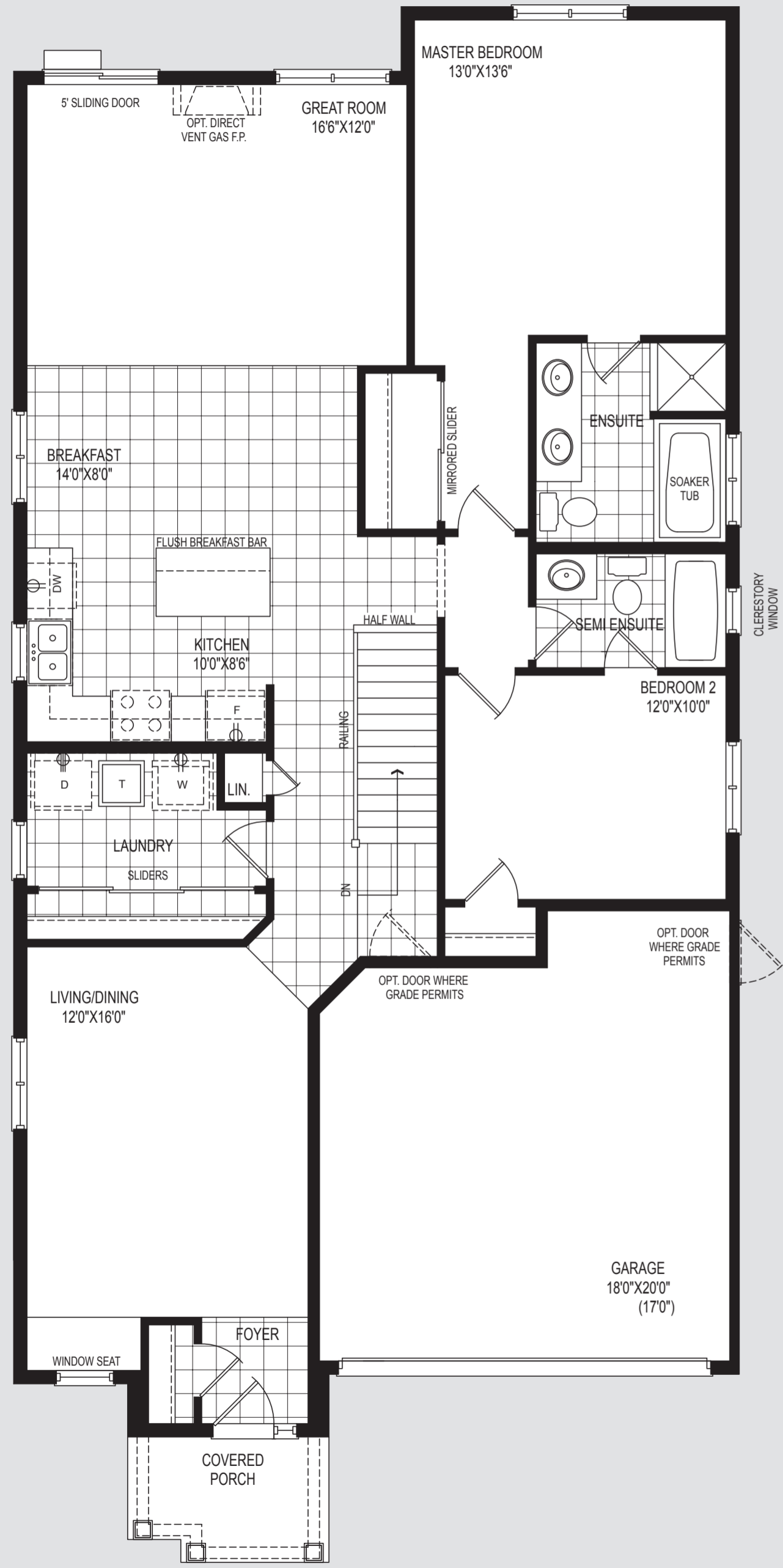
1,570 / 2,230 sq.ft.
Elevation C



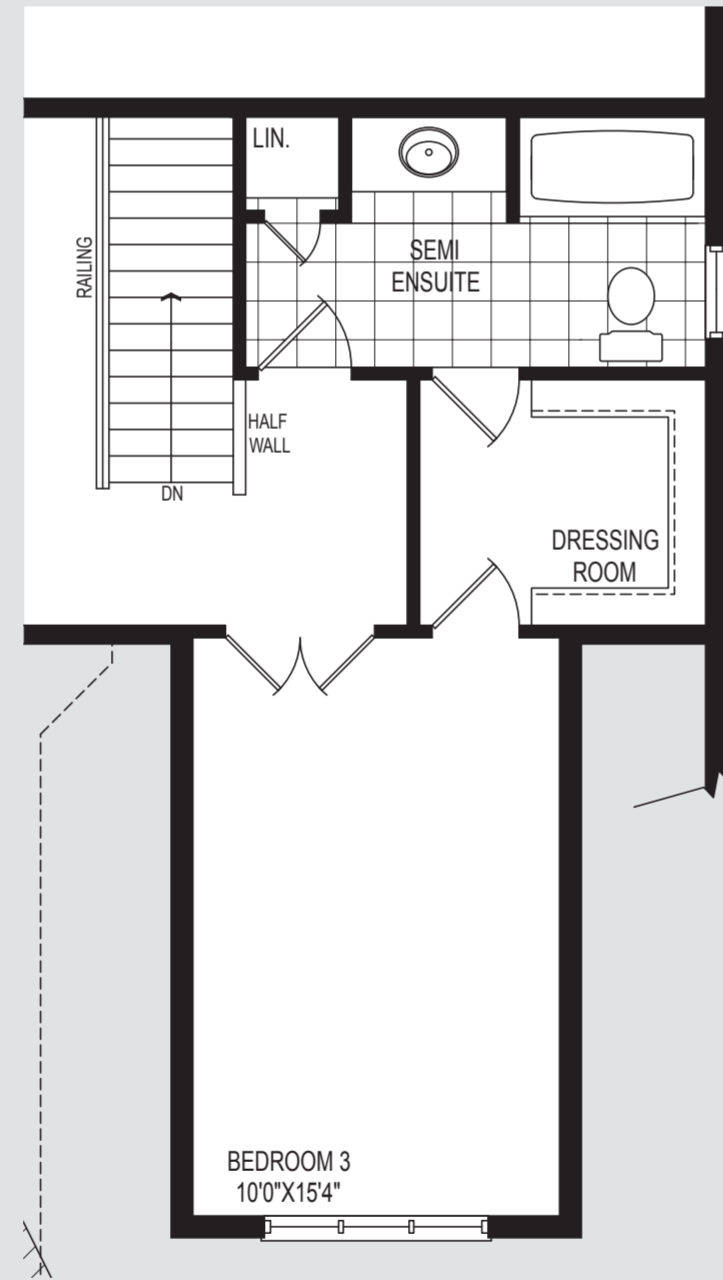
Perth

1,570/2,230 sq.ft.

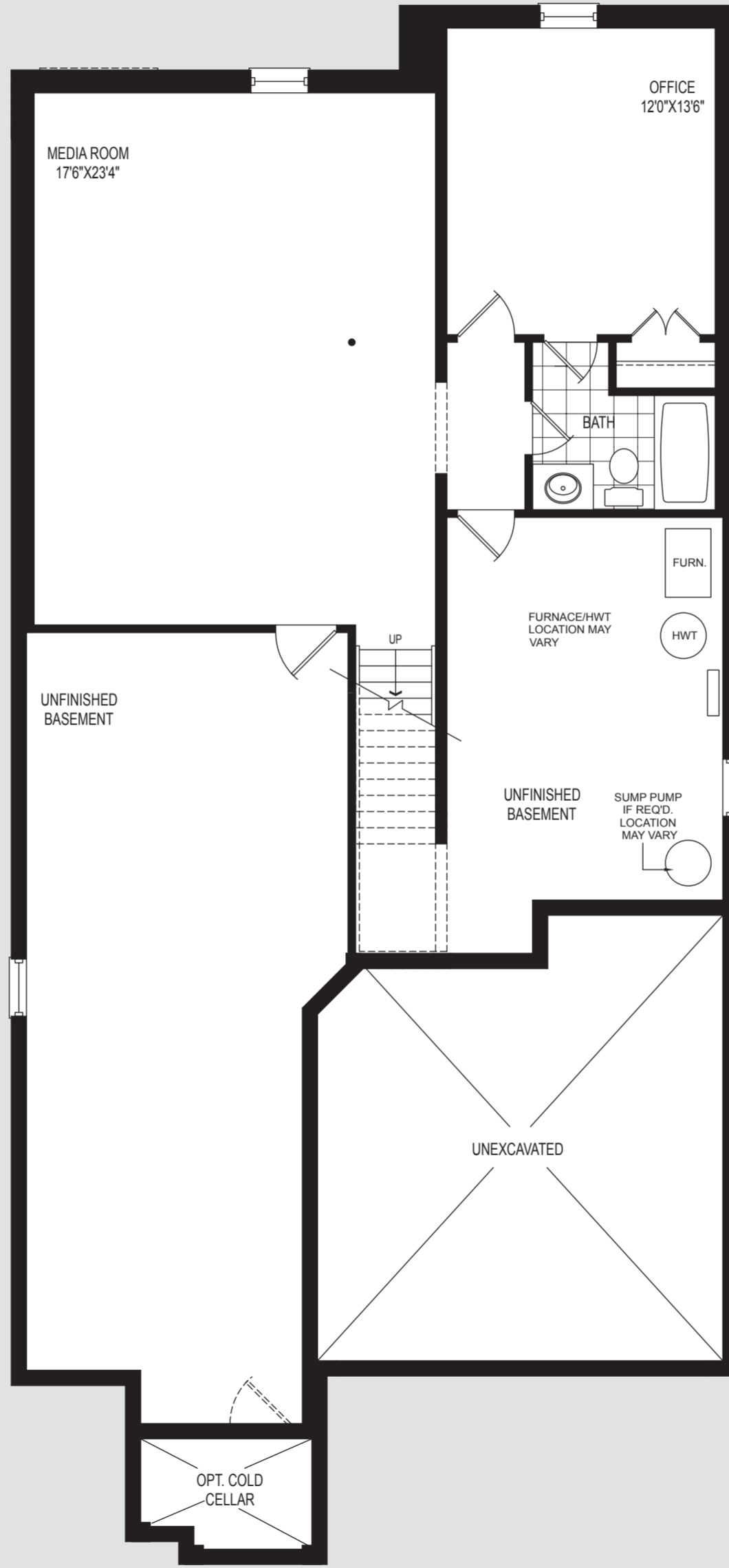
(1,570 sq.ft. includes 19 sq.ft. finished basement landing)
 (2,230 sq.ft. w/Alt. Loft)



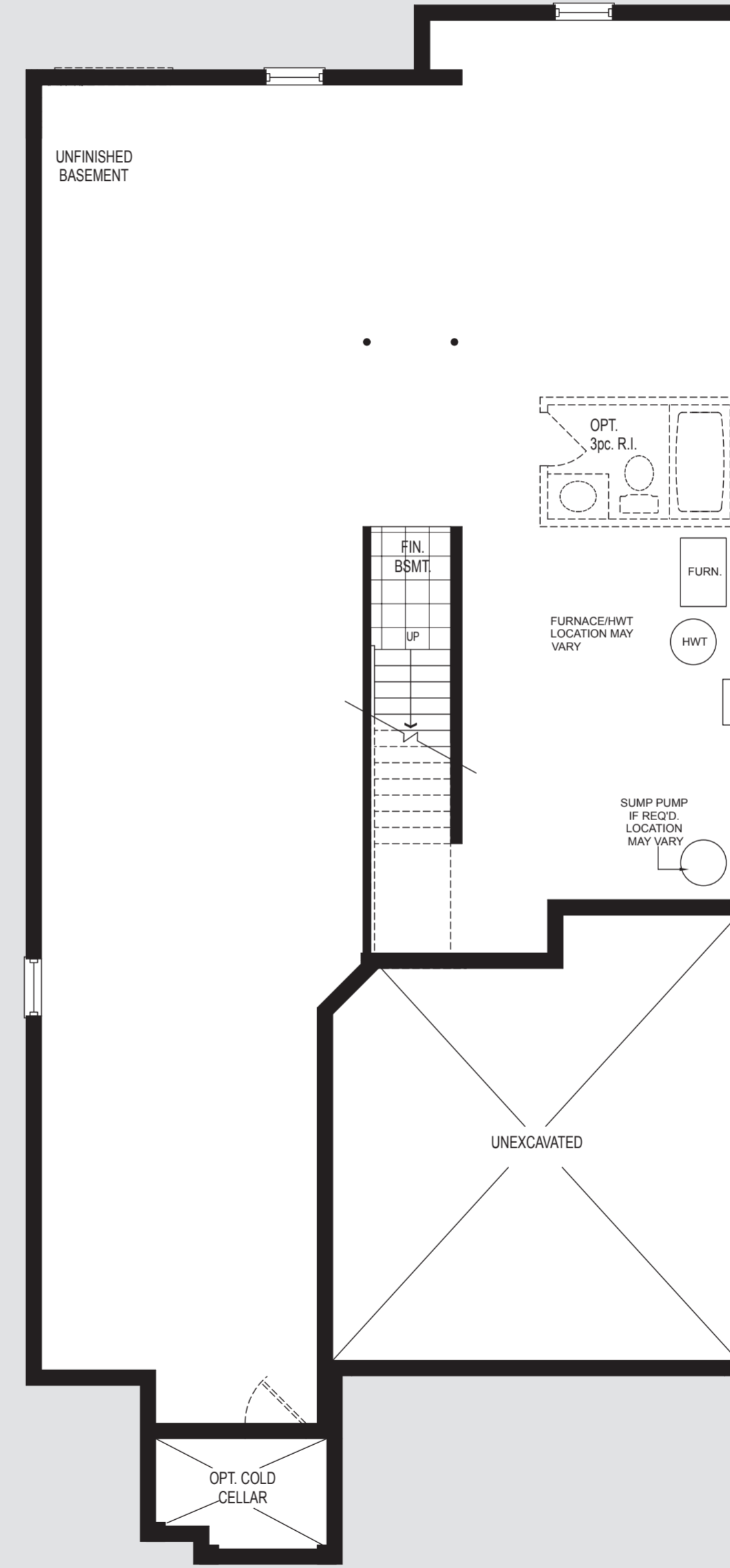
GROUND FLOOR PLAN EL. 'A' & 'C'



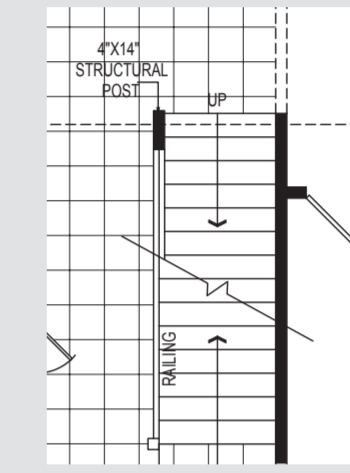
OPTIONAL LOFT PLAN EL. 'A'



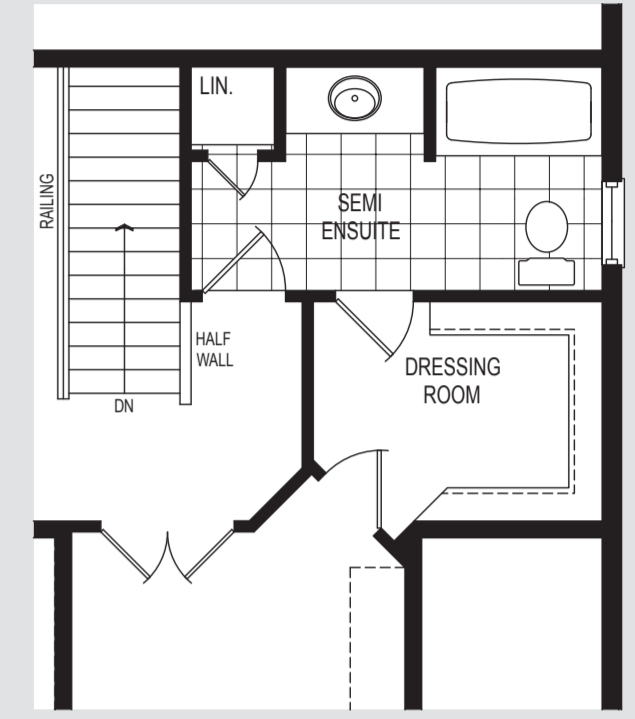
OPTIONAL FINISHED BASEMENT FLOOR PLAN EL. 'A' & 'C' (670 SQ.FT.)



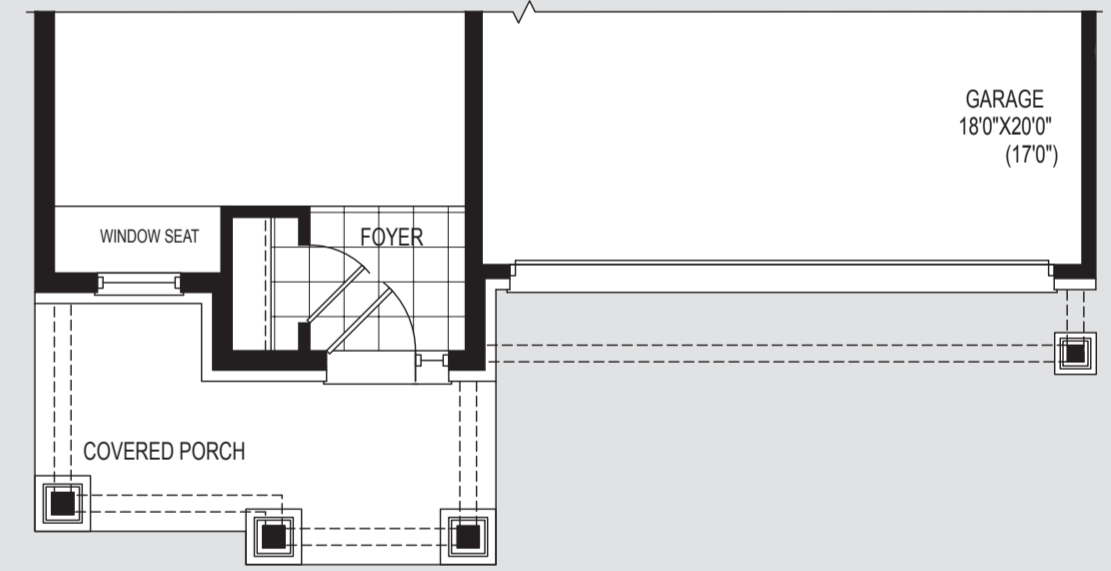
BASEMENT FLOOR PLAN EL. 'A' & 'C'



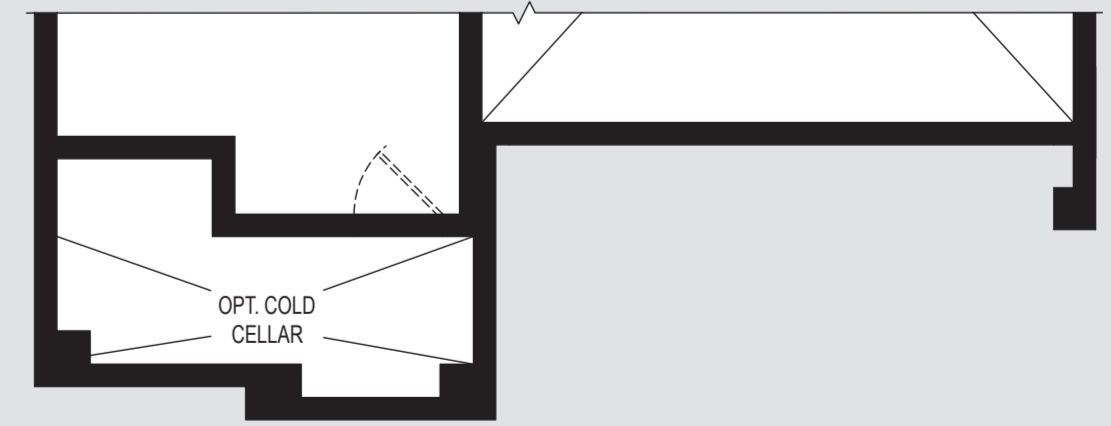
ALT. GROUND FLOOR PLAN EL. 'A' & 'C' (LOFT)



OPTIONAL LOFT PLAN EL. 'C'



GROUND FLOOR PLAN EL. 'B'



BASEMENT FLOOR PLAN EL. 'B'

Dimensions, specifications, layouts, window sizes, and materials are approximate only, may vary, and are subject to change as provided in the Agreement of Purchase & Sale. Square footage varies according to architectural style. Dotted lines indicate optional items. Plans may be reversed. Illustrations are artist's concept. E.&O.E. 40-11